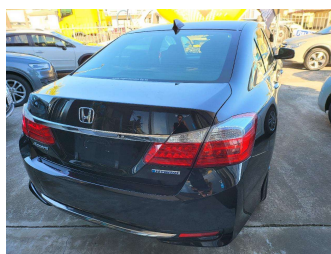
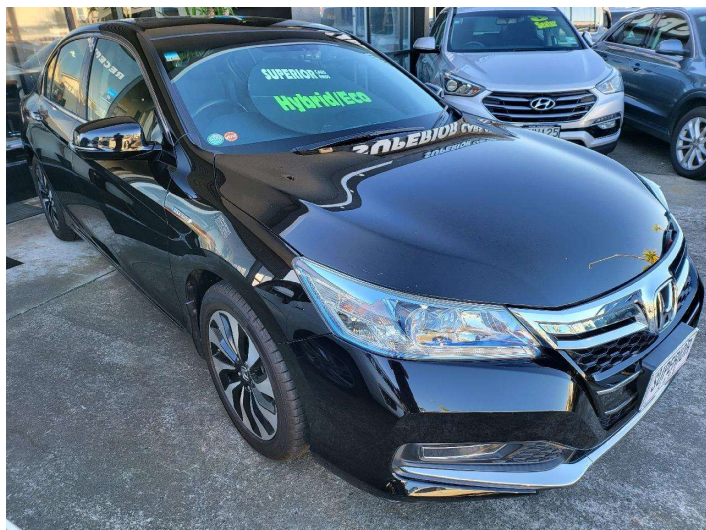


2014 Honda ACCORD HYBRID 2.0



Purchase Price **\$11,990**
Includes GST, Registration & Licensing

Indicative repayments
\$78.65 per week*
Based on a 48 month term & \$500 deposit.
Total repayments (208) = **\$16,859.95**

Peace of Mind 

Top features

- » ABS Brakes
- » Air Bags
- » Auto Wipers
- » Automatic
- » Bluetooth
- » Central Locking
- » Central Locking
- » Climate Control
- » Cloth Trim
- » Cruise Control
- » Cruise Control
- » Factory Alloys
- » Fuel Injected
- » Hybrid / Petrol.
- » Keyless Entry/Start
- » Parking Sensors
- » Power Windows
- » Rear Wiper

Body Style
4 door, Sedan

Odometer
130,750 km

Engine
1990 cc, Hybrid


Fuel Type
Petrol

Transmission
Auto

Wheels
Alloy

VIN
7AT08G13X22012016

Interior
Charcoal, Cloth

Safety

Based on 2023 VSRR rating

Reg No.
PKS178

Ext Colour
black -metallic

History
-

Seats
5 seats

CO2 Emissions
★★★★☆
99 grams/km

Energy Economy
★★★★☆☆
Annual fuel cost of \$1,650
4.2L per 100km

Cost per year is an estimate based on petrol price of \$2.80 per litre and an average distance of 14000 km. Emissions and Energy Economy figures standardised to 3P WLTP.

Stock ID: 7931



Superior Cars | Phone 06 759 9992 | Email superiorcarsnp@gmail.com
598 Junction Road, Burgess Park, New Plymouth 4371, New Zealand
www.superiorcars.co.nz

* Superior Cars is not a lender nor a financial adviser. Any amounts displayed should not be seen as an offer of finance or taken as financial advice. The interest rate, fees and loan term used in this calculation may not actually represent those available from lenders. Actual interest rates, fees and loan terms will vary per lender and are typically based on an assessment of your credit risk and responsible lending criteria. Any repayment amounts displayed are indicative only and have been calculated using several other indicative inputs. The interest rate used in this calculation is an arbitrary 16.00%, however exact interest rates vary per lender. The term of the loan used in this calculation is 48 month. Exact terms available vary per lender although options typically include 6, 12, 18, 24, 36, 48 and 60 months. This calculation also includes two typical mandatory fees charged by lenders. These are an account admin fee of \$5.00 per month (other payment frequencies may be available) and a one-off establishment fee of \$360.00. Typically, this fee can be paid upfront or, as in this calculation, be capitalised over the contract term, ie. included in the loan amount. These fees can vary per lender and other non-mandatory fees and charges may also apply. The total amount of repayments has been calculated by multiplying 208 weekly repayments (based on a 48 month term) by the weekly repayment amount of \$78.65 which equals \$16,859.95. This calculator does not consider any of your own personal circumstances and we strongly suggest you seek budgeting advice prior to committing to any loan contract. Responsible lending criteria and lender terms and conditions will likely apply to any finalised loan contract. Proof of security and/or vehicle insurance may also be required before proceeding.